

# *The Cost of Not Sharing Data*

*Barb Horn, Co-Chair CWQMC  
Colorado Parks and Wildlife*

*Lynn Padgett & Jeff Litteral  
DSN Project Coordinators*

**EVERYTHING  
EVERYWHERE**



**ALL OF THE TIME**

## *Quality Decisions need:*

- *Quality Information – in each sector*
  - *state/local, public/private, regulatory/non-regulatory*
- *Adequate coverage*
  - *Temporal, Spatial, Media, Constituent, methods*
- *Ability to collaborate and act*
  - *Priorities, DATA, methods, training, resources, etc.*



Financial  
Barriers

Will Power



Innocent  
Desirer of data

Technical  
Barriers

## Mission

*Provide a collaborative forum for implementation of effective collection, analyses, formatting and sharing of water quality data*

# Cost

Generate Information not Data

Use Data More Than Once

## Values/Principles

*Inclusion*

*Participation*

*Innovation*

*Transparency*

*Relevancy*

*Trust*

*Leverage Existing  
Resource*

*Collaboration  
Integration*

*Everyone has  
something to  
contribute*

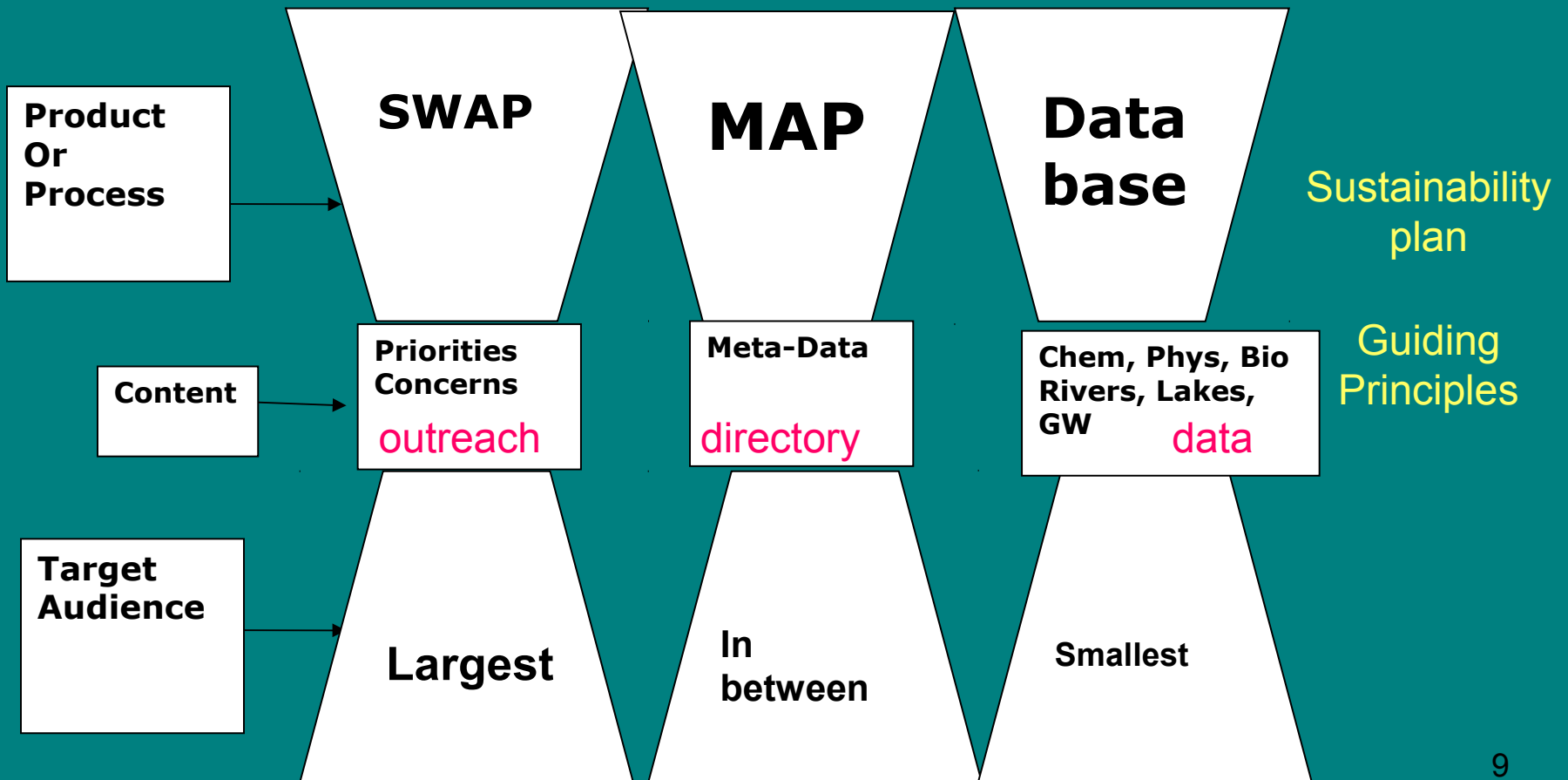
# Colorado Data Sharing Network

## Water Quality Data Here Means:

*Chemical, Physical Habitat or Biological  
Data in rivers, lakes, reservoirs, ground  
water or wetland water bodies*



**CWQMC Data Sharing Network  
PROJECT COMPONENTS**



**CWQMC Data Sharing Network  
PROJECT COMPONENTS**

**Product  
Or  
Process**



**Target Audience  
Anyone who:**

**Content**



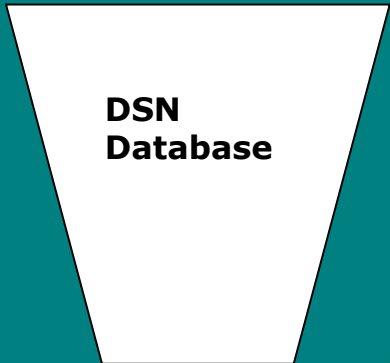
**Does not manage data**

**Share data**

**Target  
Audience**



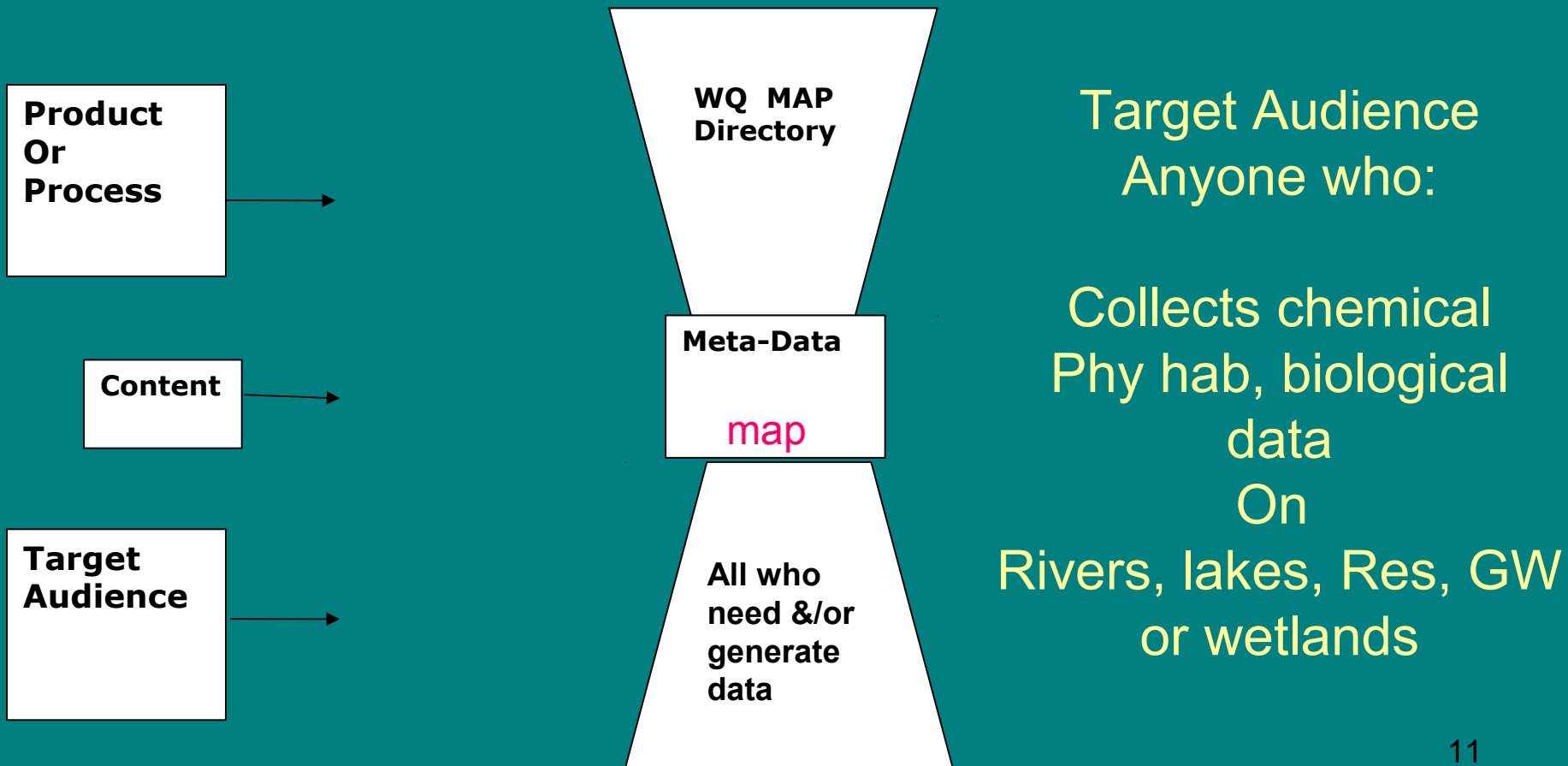
**Needs STORET**



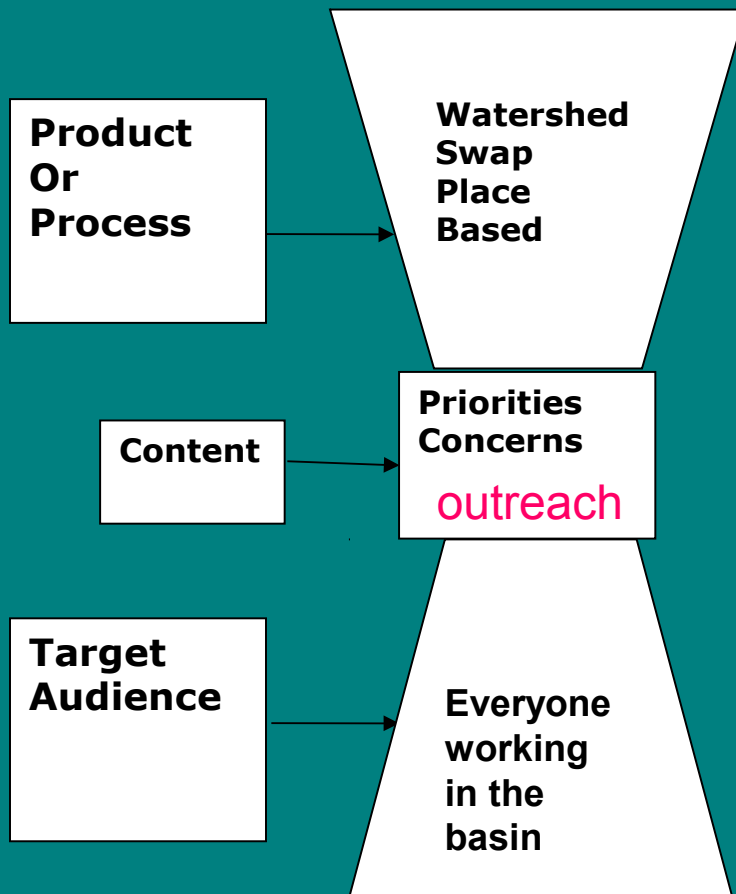
**Chem, Phys, Bio  
Rivers, Lakes,  
GW database**



**CWQMC Data Sharing Network  
PROJECT COMPONENTS**



**CWQMC Data Sharing Network  
PROJECT COMPONENTS**



Target Audience  
Anyone who:

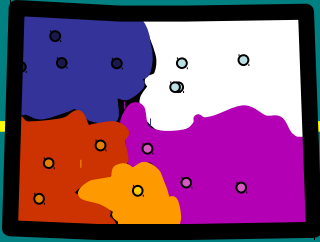
In the watershed:

Who is indirectly or  
directly engaged in  
water management

Informally or formally

Fed, state, reg, local

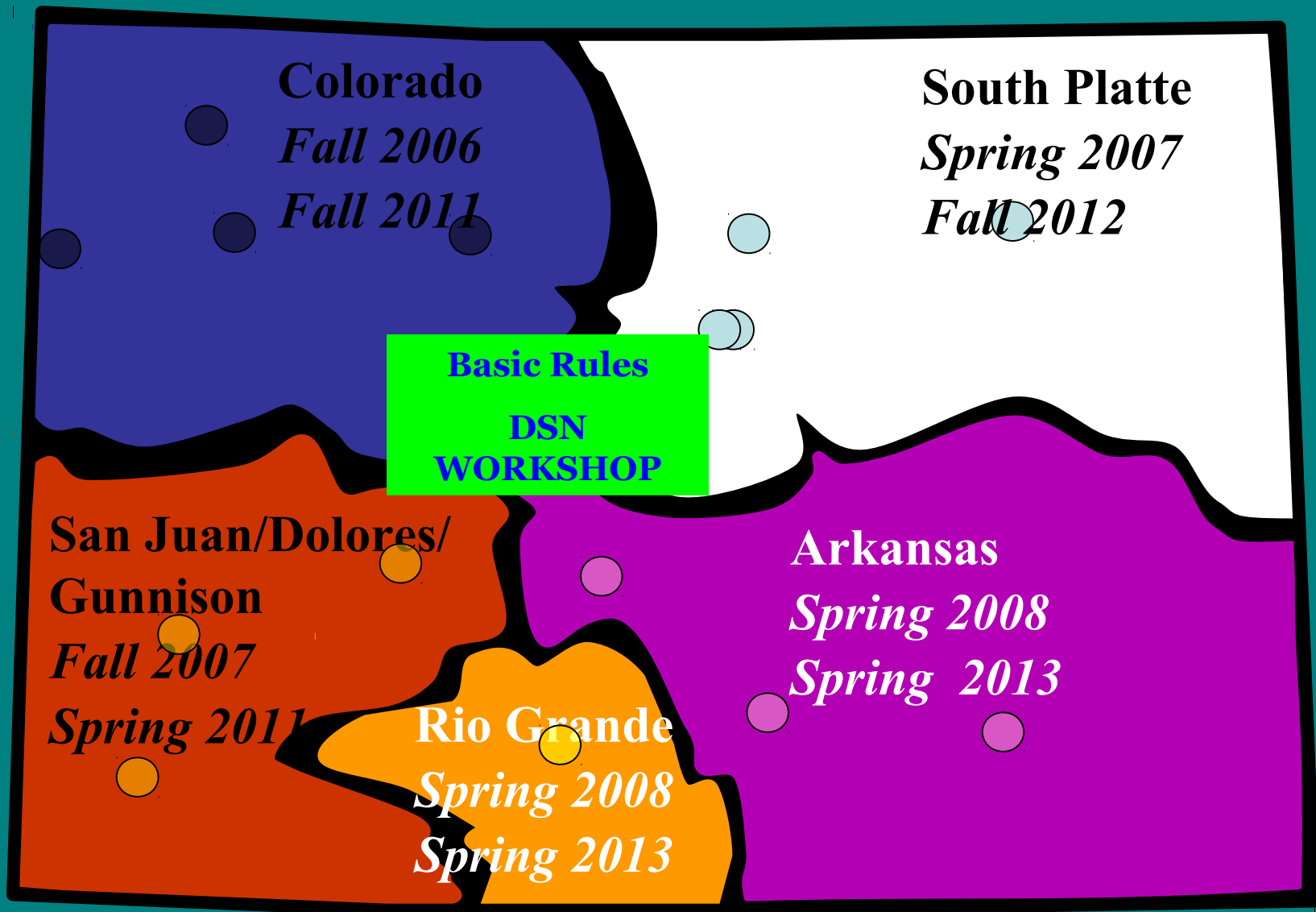




# What is a SWAP?

- *Placed Based one-day event- watershed scale*
- *Exchange Meta-data – W”s of program or data needs, Use a map*
- *Label participants data generator, user, both*
- *Exchange priorities, needs and concerns*
- *Exchange current projects, activities, future plans*
- *Develop FACT SHEET - Post*
- *Conduct Map/Database Training*
- *Engage other local audiences*
- *Evaluate*

# Where and When ?



# Cost

*Real Duplication*

*Reinvention -scale vs resources*

*Appropriate \$ / task*

*Redirect Savings into P & R*

*Elevate Dialogue to Action / Solutions*

Financial  
Barriers

Will Power



Innocent  
Desirer of data

Technical  
Barriers



# REQUIRES

- Critical Mass
- Institutionalized
- Currency
- Synergy vs Stove Pipe

# Cost Savings.....Not Free but Cheap...

*Watershed Plans*

*Source Water Protection*

*Protection / Restoration Projects*

*NPS Projects*

*Consultant Work*

*Water Supply Planning*

*DW and WW Treatment*

*Stewardship*

**CWQMC Data Sharing Network  
PROJECT COMPONENTS**

